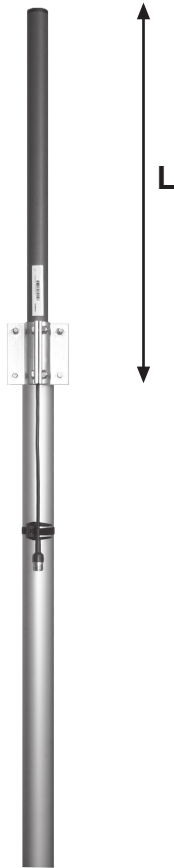


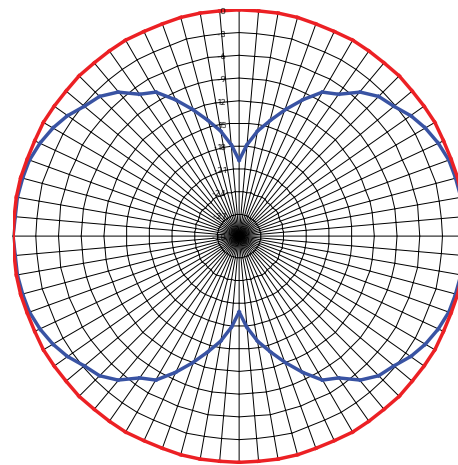
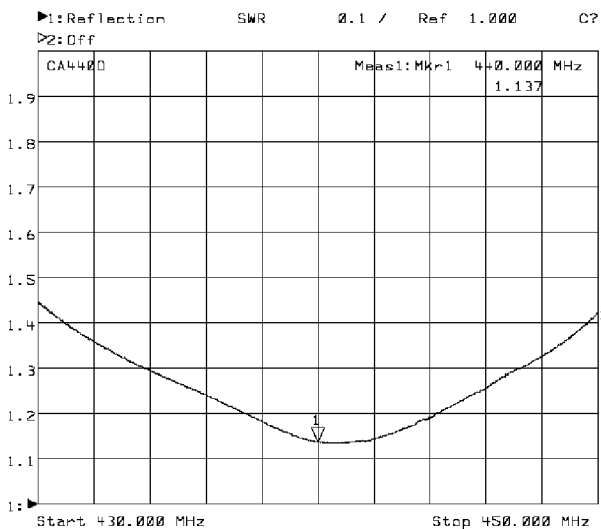
ComAnt[®] Communications Antennas



FREQUENCY INDEPENDENT DATA

Description: end fed half wave
 Frequency: 326-353 MHz, 336-364 MHz,
 380-400 MHz, 405-440 MHz,
 440-475 MHz, 830-890 MHz,
 890-960 MHz
 Impedance: 50 ohm
 Gain: 2 dBi
 Polarization: vertical
 Connector: N-female/TNC-female
 VSWR: < 1.5
 Radome: UV resistant ABS, RAL 7012,
 PU foam filling
 Radiator: copper
 Attachment: Ø 35-60 mm, aluminium alloy
 bracket, stainless steel V-
 bolts and self locking nuts
 Lightning
 protection: DC-short circuited
 Temperature: -40° - +80°C
 IP: 67

RADIATION PATTERN



— E dB — H dB

CAO END FED HALF WAVE