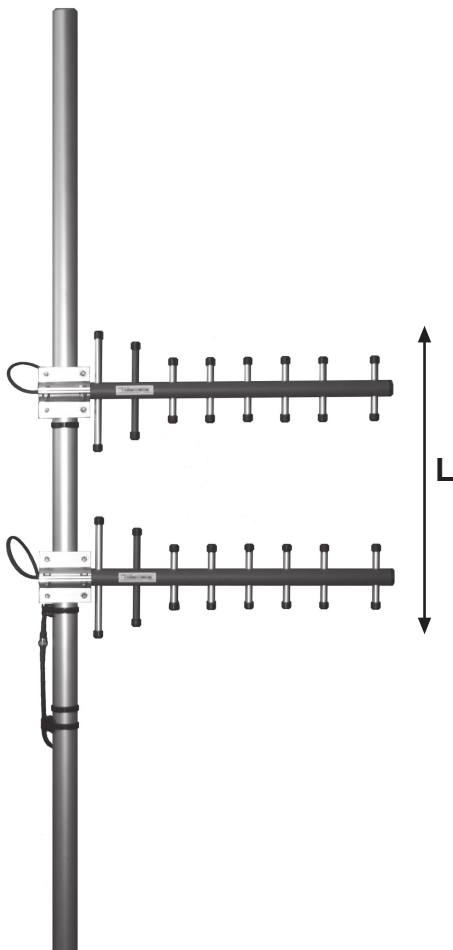


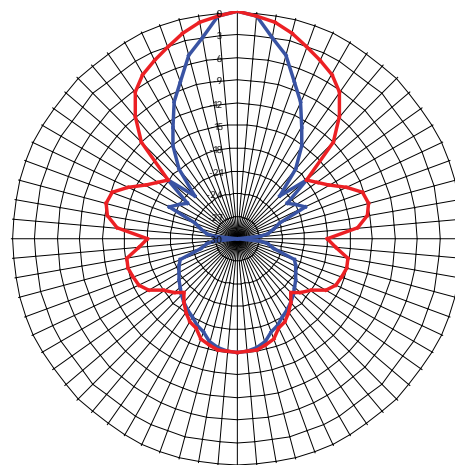
ComAnt[®] Communications Antennas



FREQUENCY INDEPENDENT DATA

Description:	directional stacked yagi array optional beam tilting
Frequency:	326-353 MHz, 336-364 MHz, 365-395 MHz, 380-410 MHz, 405-440 MHz, 440-475 MHz,
Impedance:	50 ohm
Gain:	14 dBi
Polarization:	vertical/horizontal
Connector:	N-female/TNC-female
VSWR:	< 1.5
Radome:	UV resistant ABS, RAL 7012, PU foam filling
Radiator:	copper
Passive elements:	coated aluminium
Attachment:	Ø 35-60 mm, aluminium alloy bracket, stainless steel V- bolts and self locking nuts
Lightning protection:	DC-short circuited
Temperature:	-40° - +80°C
IP:	67

RADIATION PATTERN



— E dB — H dB

CompleTech
ComAnt[®]-antennas by CompleTech, Finland

CAS2+++ DIRECTIONAL STACKED YAGI ARRAY