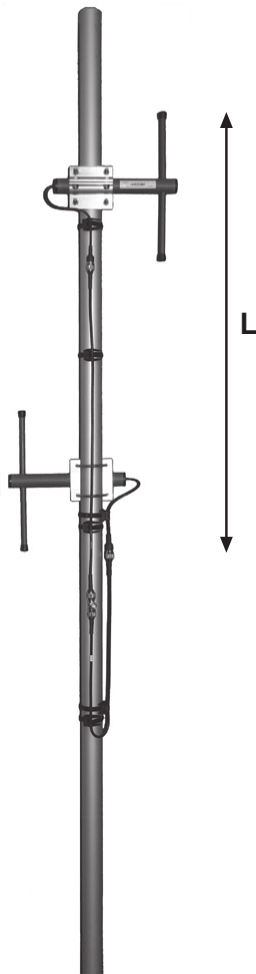


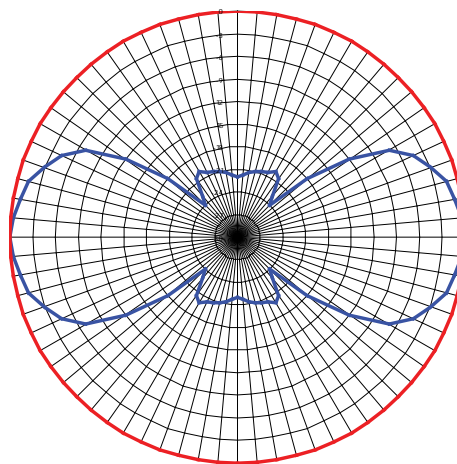
ComAnt[®] Communications Antennas



FREQUENCY INDEPENDENT DATA

Description:	omnidirectional echelon optional beam tilting
Frequency:	135-145 MHz, 144-156 MHz, 154-166 MHz, 163-177 MHz, 221-239 MHz, 326-353 MHz, 365-395 MHz, 380-410 MHz, 405-440 MHz, 440-475 MHz,
Impedance:	50 ohm
Gain:	5 dBi
Polarization:	vertical
Connector:	N-female/TNC-female
VSWR:	< 1.5
Radome:	UV resistant ABS, RAL 7012, PU foam filling
Radiator:	copper
Attachment:	Ø 35-60 mm, aluminium alloy bracket, stainless steel V- bolts and self locking nuts
Lightning protection:	DC-short circuited
Temperature:	-40° - +80°C
IP:	67

RADIATION PATTERN



— E dB — H dB

CAE2 OMNIDIRECTIONAL ECHELON